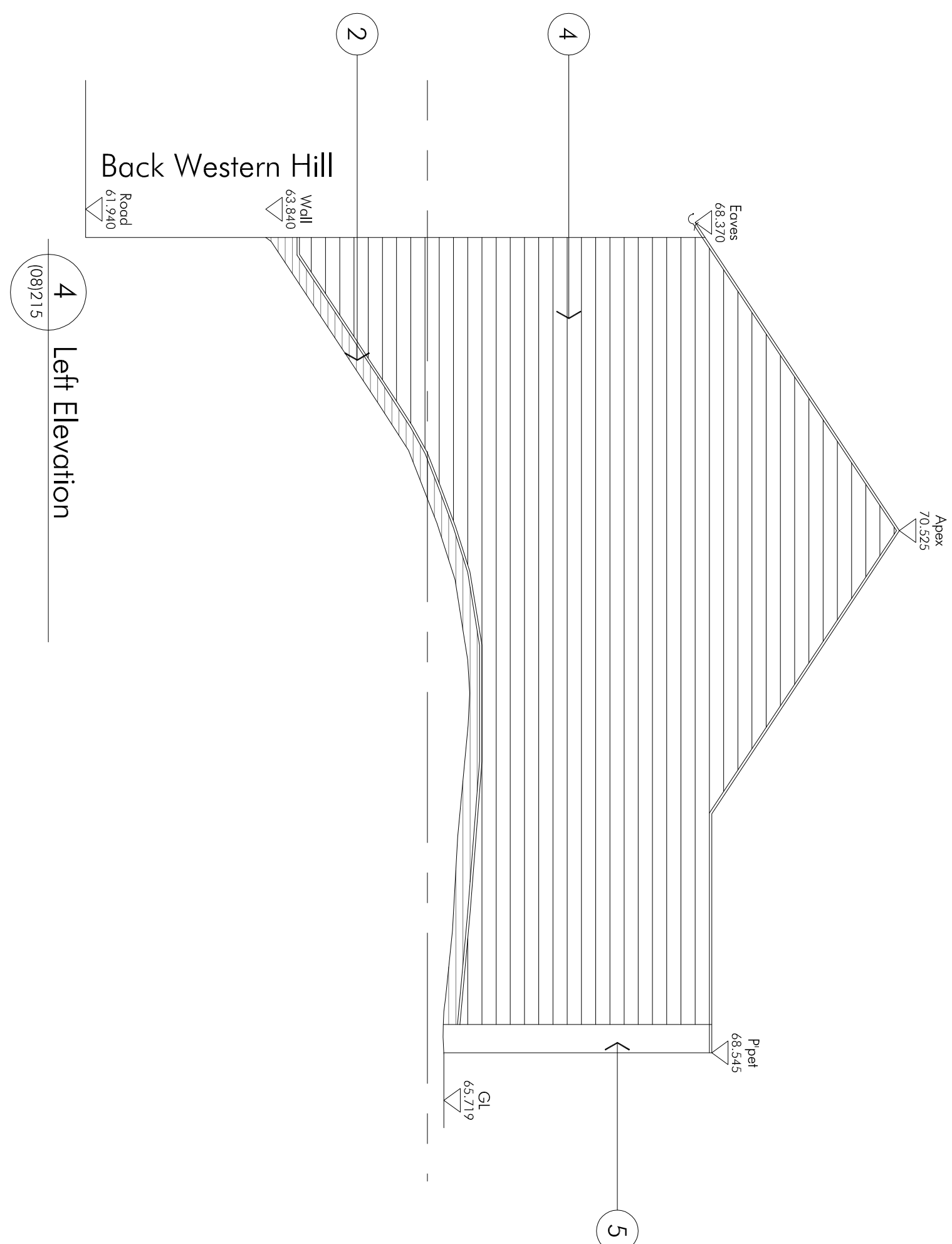
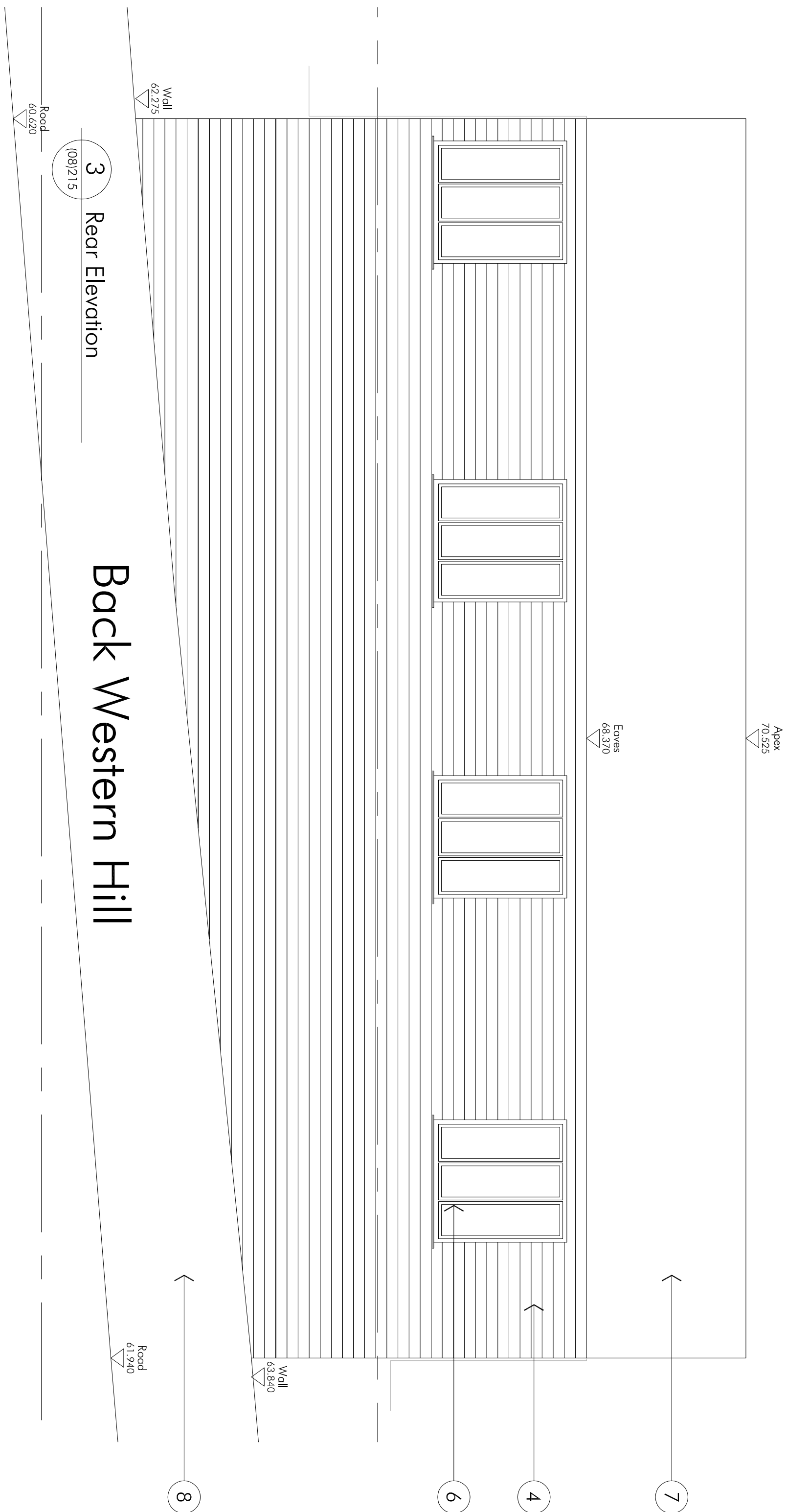


Datum 61.00m A.O.D.



SCALE 1:50

CIRRE

**CHURCH LUKAS**  
 IMPERIAL BUILDINGS  
 10 NOTTINGHAM STREET  
 LONDON W1A 2LX

Copyright in the drawings is the property of **CHURCH LUKAS**  
 Copyright is reserved by them and the drawing is issued on the condition that it is not  
 copied, reproduced, retained or added to in any unauthorised manner, either wholly or  
 in part without the consent in writing of:

**Everitt Securities Ltd**  
 10-11, Kew Road, Putney, London SW15 2NU  
 0-17

Tel: 0115 941 0022  
 Email: [enquiries@churchlukas.com](mailto:enquiries@churchlukas.com)

<p>NOTES:</p>	
<p><b>Elevation Key</b></p> <ol style="list-style-type: none"> <li>Dark Grey Curtain Wall</li> <li>Dark Brick to match Student Accommodation</li> <li>Large Format Cladding to match Student Accommodation</li> <li>Shiplap Board Cladding</li> <li>Dark Fascade Cladding</li> <li>White Windows</li> <li>Mid Grey Roof Finish</li> <li>Existing Stone Wall</li> </ol>	
<p><b>Project Title:</b> Former County Hospital, Durham Proposed Student Accommodation</p> <p><b>Drawing Title:</b> Proposed Elevations Student Hub</p>	
<p><b>For Review</b></p> <p><b>CHURCH LUKAS</b></p> <p><b>PLANNING</b></p>	
<p><b>PROJECT NO:</b> 13020</p> <p><b>DWG NO:</b> (08) 215</p> <p><b>REVISION:</b> A</p>	<p><b>E/C:</b> 13020/CAD/08/215/001</p> <p><b>COPYRIGHT:</b> © 2014 CHURCH LUKAS LIMITED. ALL RIGHTS RESERVED.</p>